



5 Sunningdale Avenue, Whitefield
Manchester

In Excess of **£700,000**

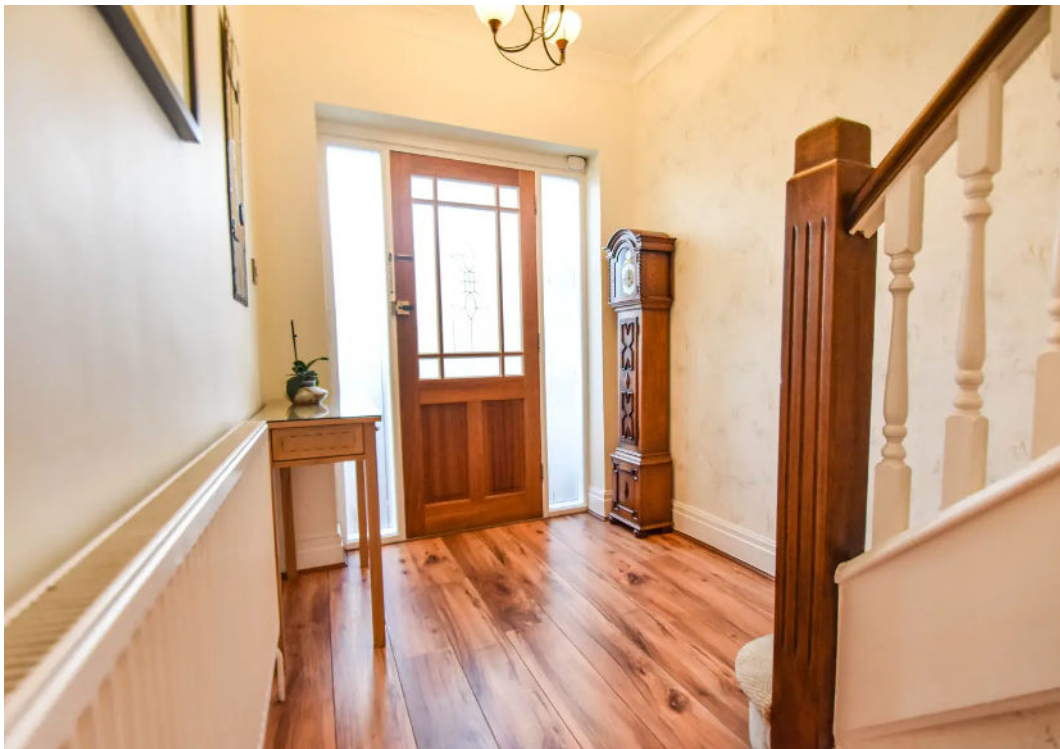
Council tax band: G

Tenure: Freehold

- Four Bedroom Detached Family Home
- Open Plan Kitchen/Dining/Living Area
- Prime Whitefield Location
- Stunning Large Rear Garden
- Quiet Cul-De-Sac Location
- Close to Local Amenities
- Driveway and Garage for Off Road Parking







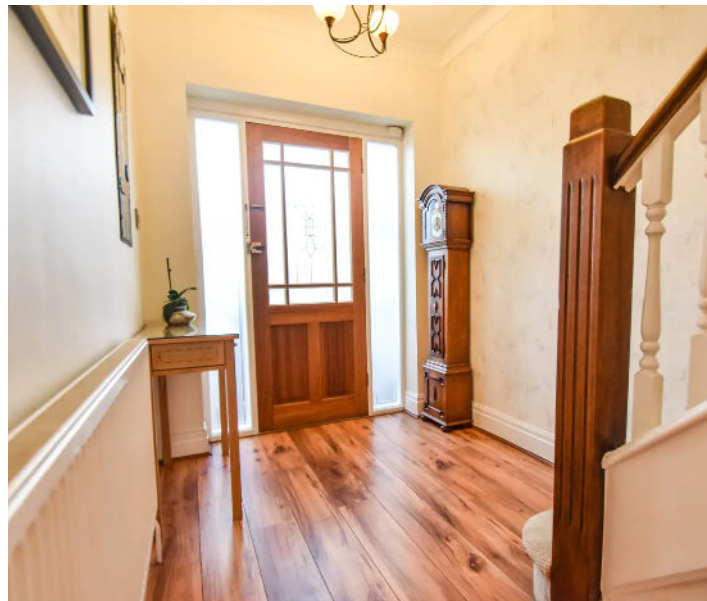


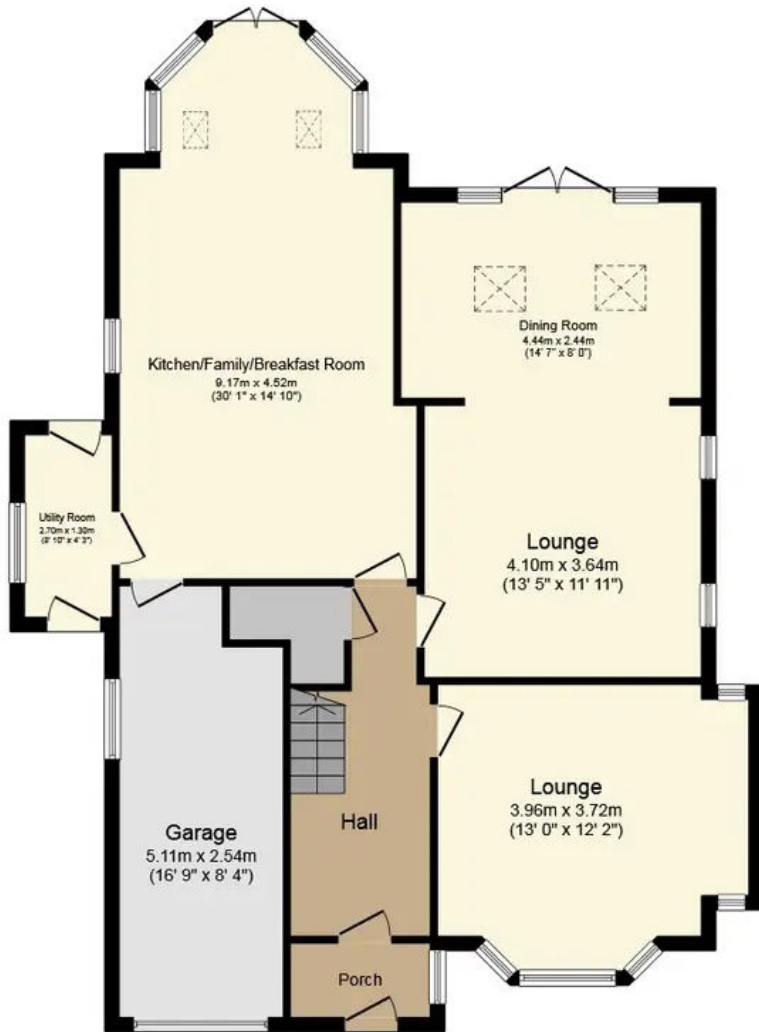


GARDEN

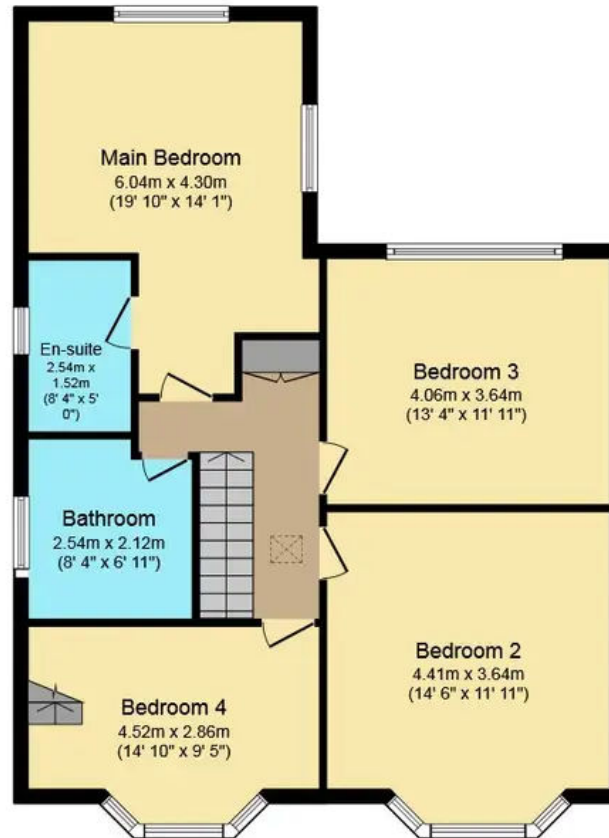
ON DRIVE

2 Parking Spaces

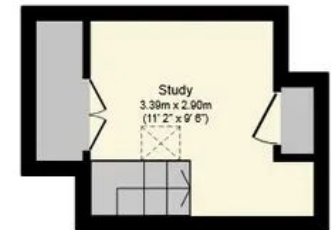




Ground Floor



First Floor



Second Floor

Total floor area 206.9 sq.m. (2,228 sq.ft.) approx

This Floor Plan is for illustration purposes only and may not be representative of the property. The position and size of doors, windows and other features are approximate. Unauthorized reproduction prohibited. © PropertyBOX