



34 Richmond Avenue, Prestwich
Manchester

In Excess of **£350,000**

Council Tax band: C

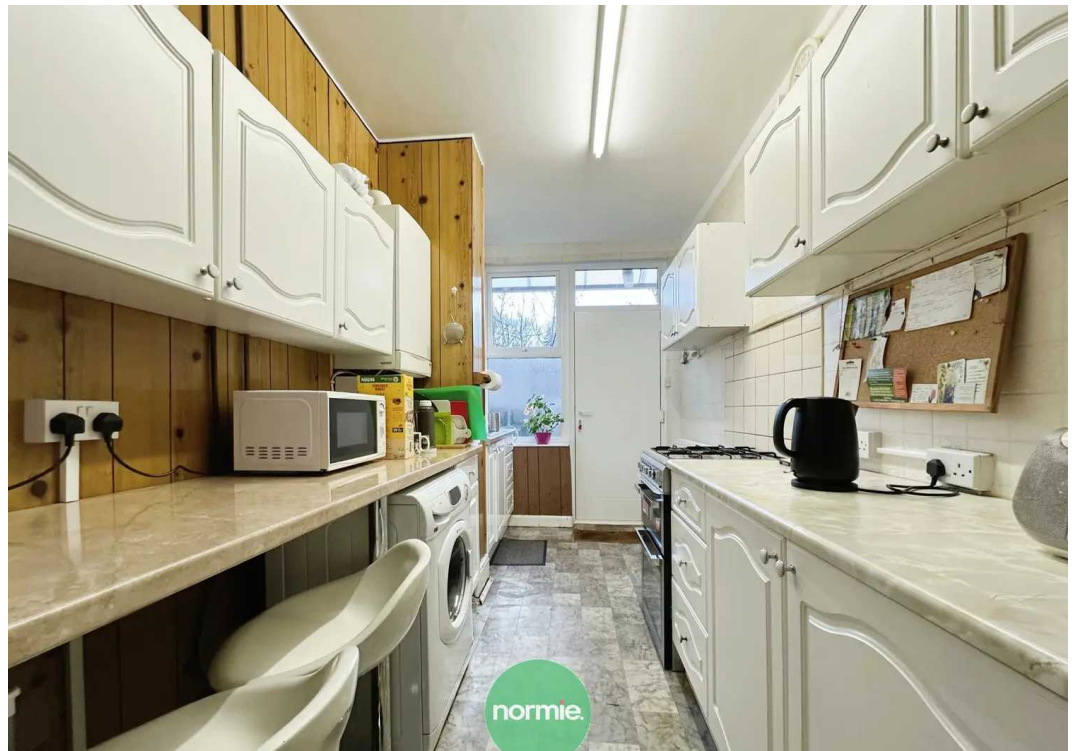
Tenure: Leasehold

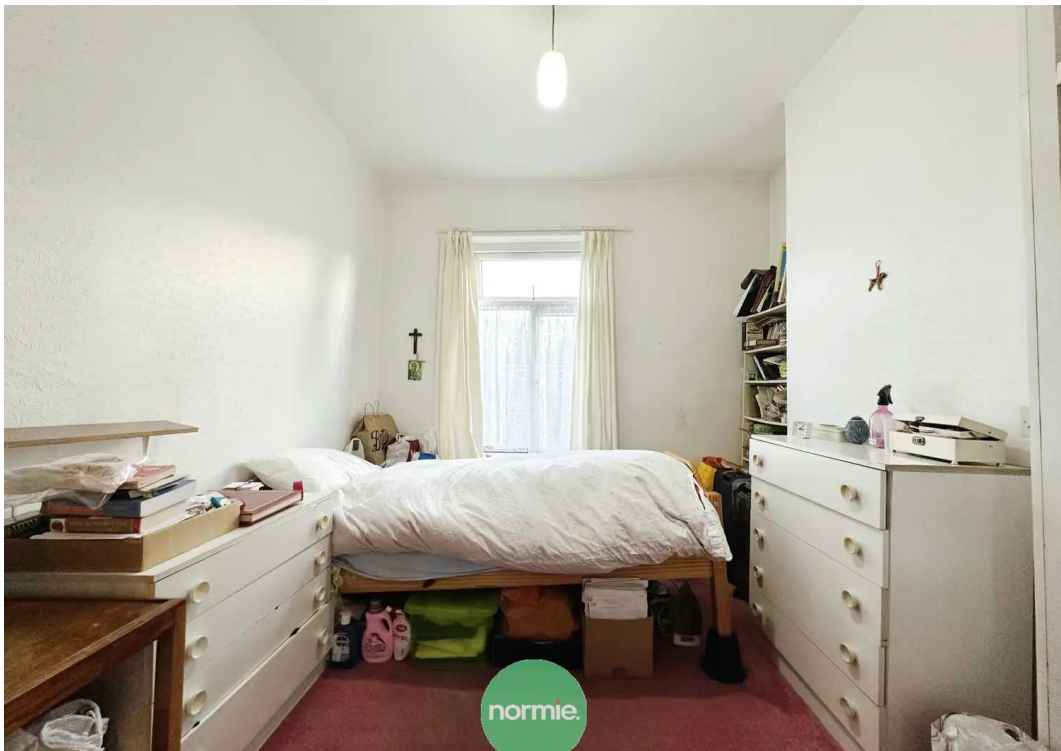
EPC Energy Efficiency Rating: D

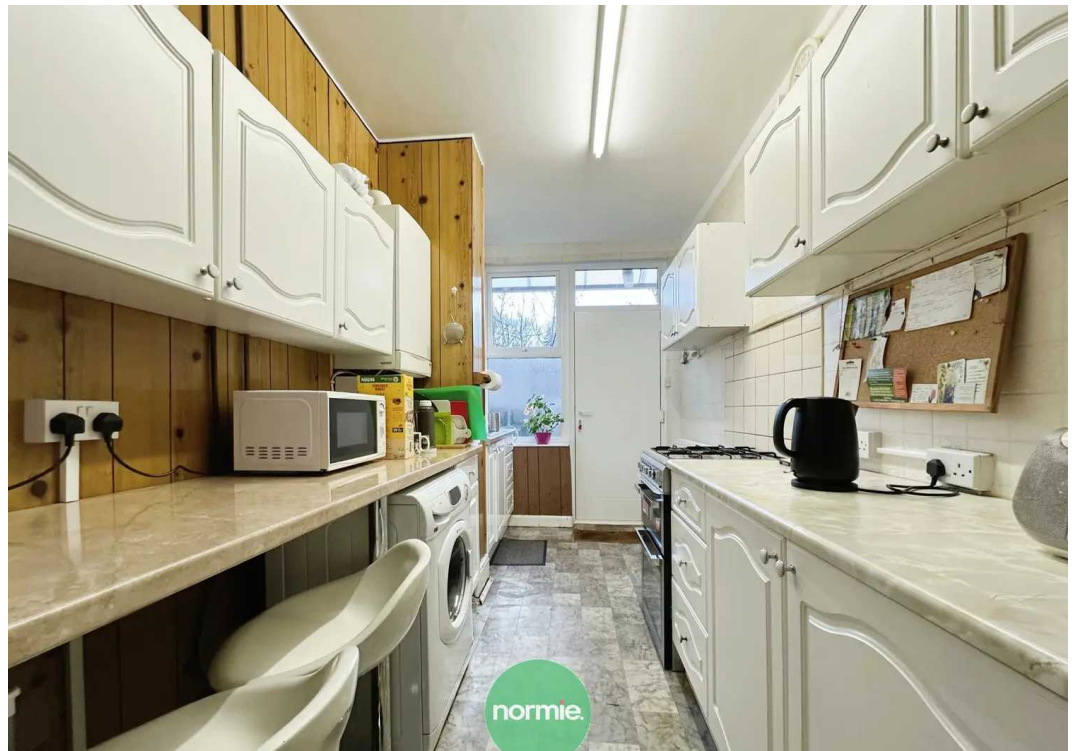
EPC Environmental Impact Rating:

- Three Bedrooms
- Mid-terrace
- Excellent location
- Original features throughout
- Two reception rooms
- Rear Garden/Patio
- Fitted Kitchen









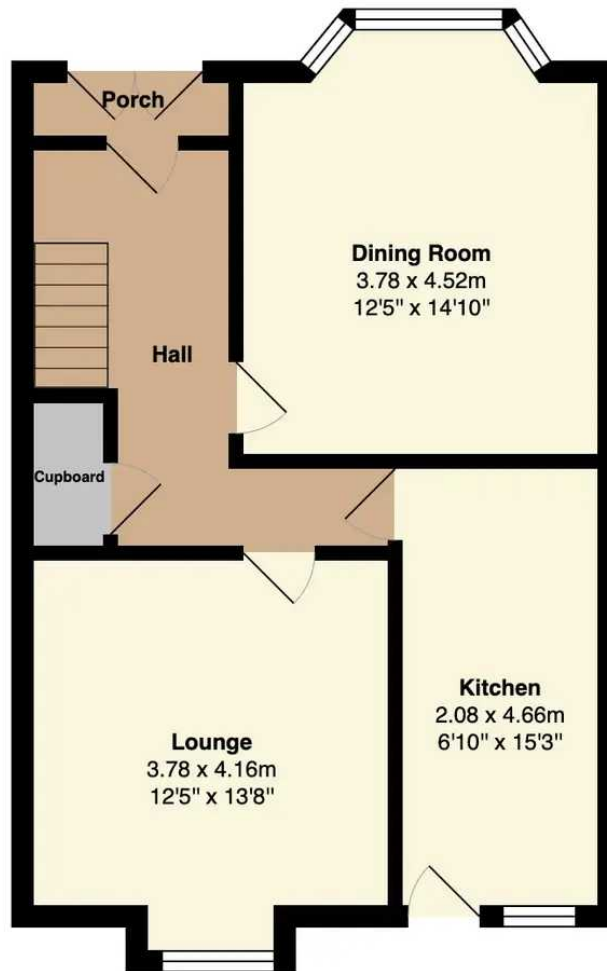


GARDEN

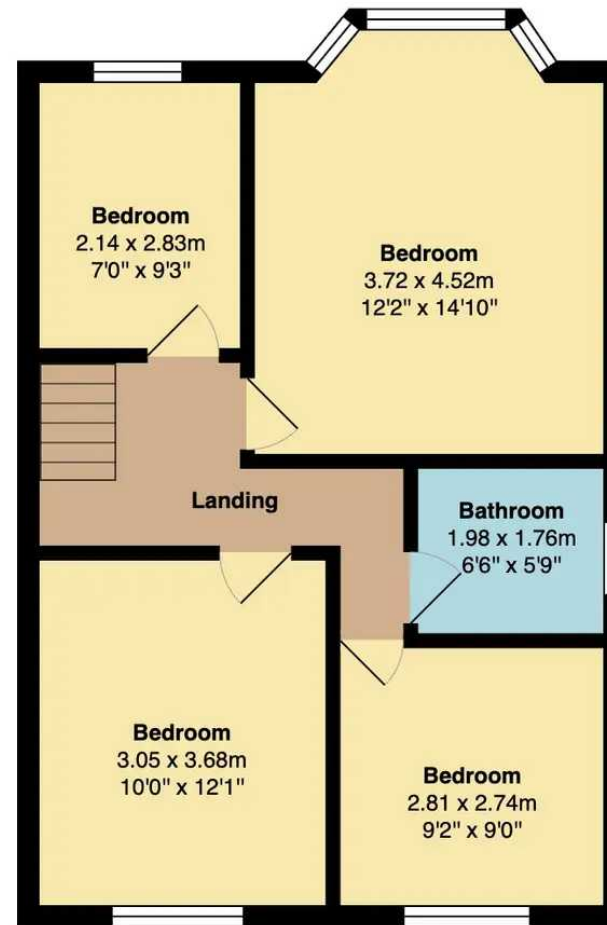
ON ROAD

1 Parking Space





Ground Floor
Area: 54.6 m² ... 588 ft²



First Floor
Area: 54.0 m² ... 581 ft²

Total Area: 108.6 m² ... 1169 ft²

