



Savoy Court, Cross Street

£95,000 In Excess of

Property Description

Normie & Company are pleased to offer for sale this one bedroom ground floor apartment. This apartment is situated in the heart of Whitefield and is close to local shops, restaurants, bars, the Metrolink and transport links. The apartment briefly comprises of entrance hall, a spacious lounge/dining room with patio doors onto the communal gardens, a fitted kitchen, a double bedroom with fitted furniture and a bathroom. It is ideally suited to a first time buyer or buy to let investor and is offered with no onward chain.

Ground Floor

The communal entrance way on the right hand side (when facing the block) leads to the apartment. The entrance hall includes fitted cloakroom/ storage cupboard. The spacious lounge/dining room has ample space for lounge and a dining room furniture and French patio doors onto the communal gardens. The fitted kitchen includes wall/base units and heat resistant work surfaces and space for cooker and fridge/freezer. The master bedroom is a large double room and includes fitted furniture. The bathroom includes a walk-in shower cubicle, WC and wash hand basin.

Outside

There are well maintained communal gardens which are stocked with a range of bushes and shrubs. Communal parking available.

EPC Rating: C



Key Features

- ✓ Ground Floor Apartment
- ✓ Double Bedroom With Fitted Furniture
- ✓ Close To Shops, Bars Restaurants And The Metrolink
- ✓ Fitted Kitchen
- ✓ No Onward Chain



Rooms

Lounge Diner

Kitchen

Bedroom

Bathroom

External Areas

Communal Garden

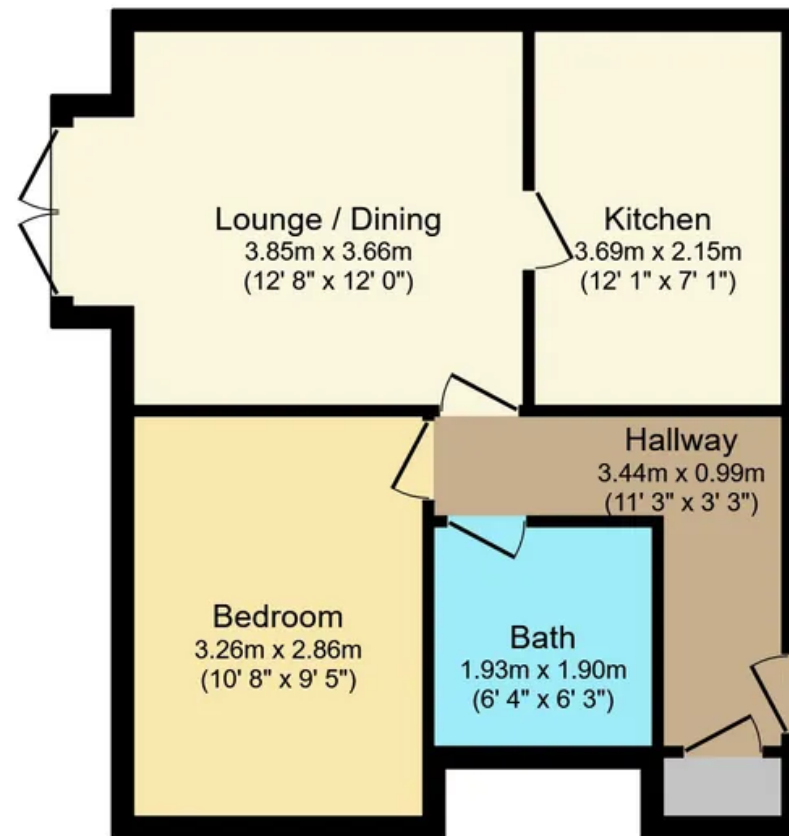
Allocated Parking

1 Parking Space





All



Total floor area 49.0 sq.m. (528 sq.ft.) approx

This Floor Plan is for illustration purposes only and may not be representative of the property. The position and size of doors, windows and other features are approximate. Unauthorized reproduction prohibited. © PropertyBOX

Normie & Company

0161 773 7715

sales@normie.co.uk

