



394 Great Clowes Street, SALFORD

Salford

In Excess of **£650,000**

Council Tax band: A

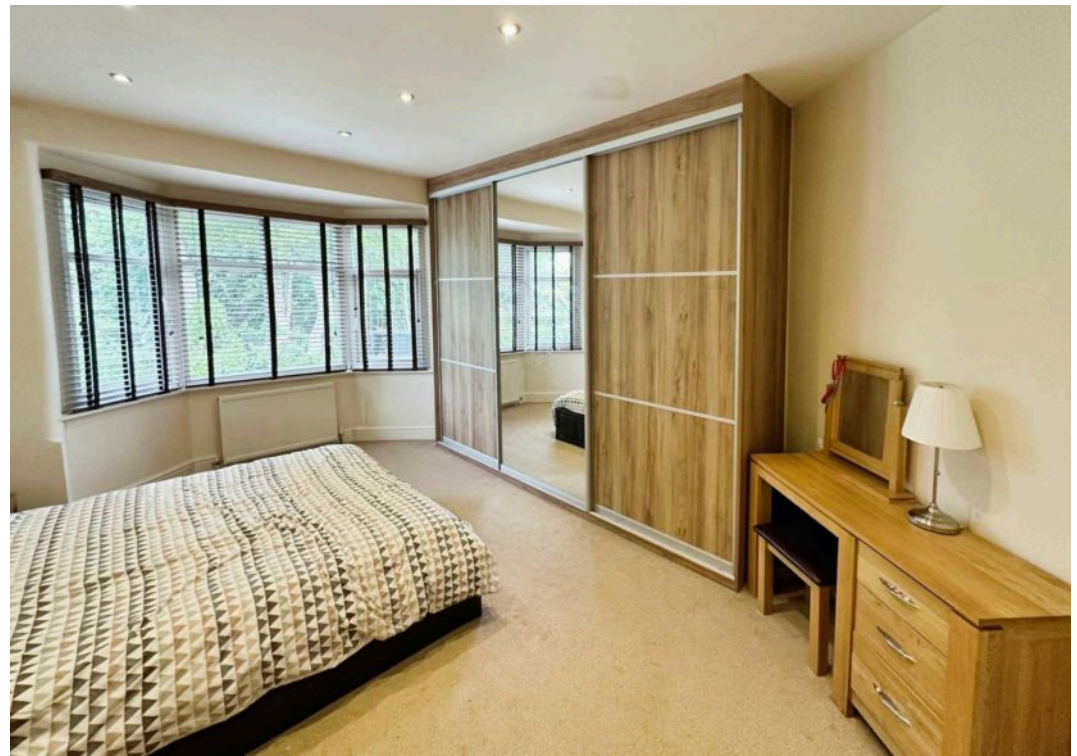
Tenure: Freehold

EPC Energy Efficiency Rating: D

EPC Environmental Impact Rating:

- Five Bedrooms
- Self Contained Basement Flat
- Semi-Detached
- Period Property
- Close to Transport Links









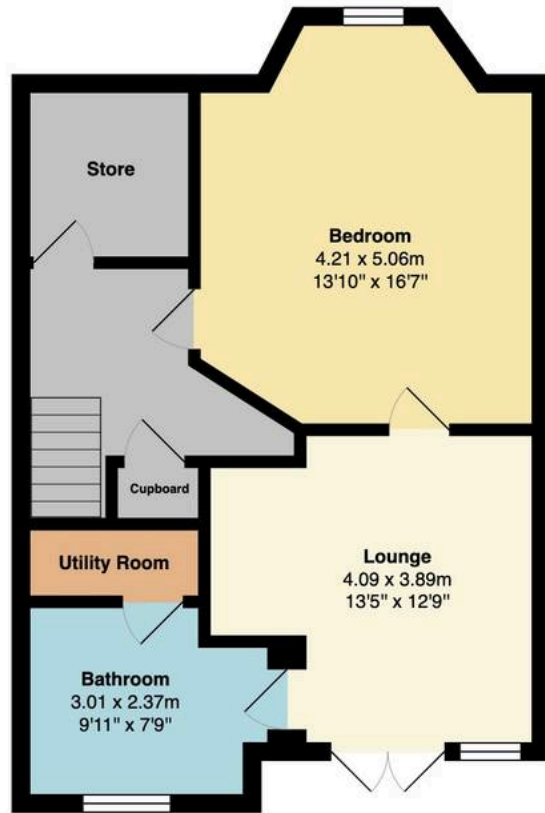


GARDEN

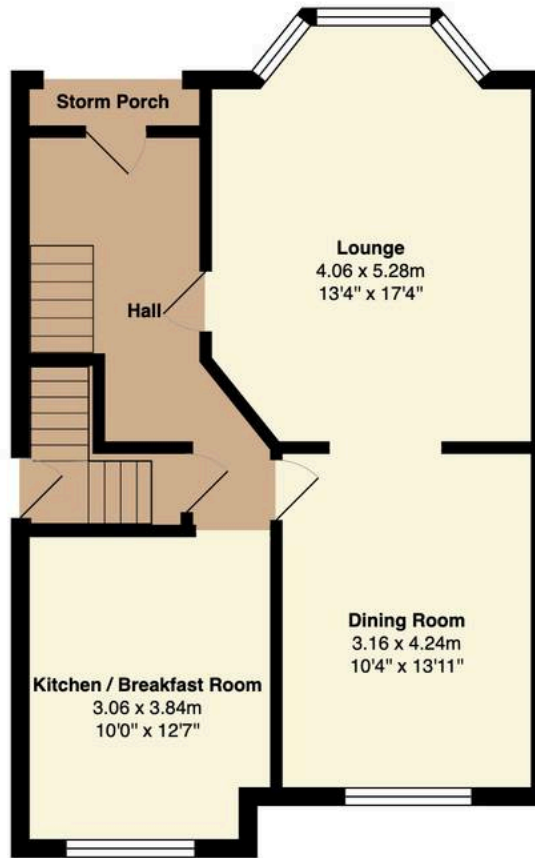
FRONT GARDEN

ON STREET

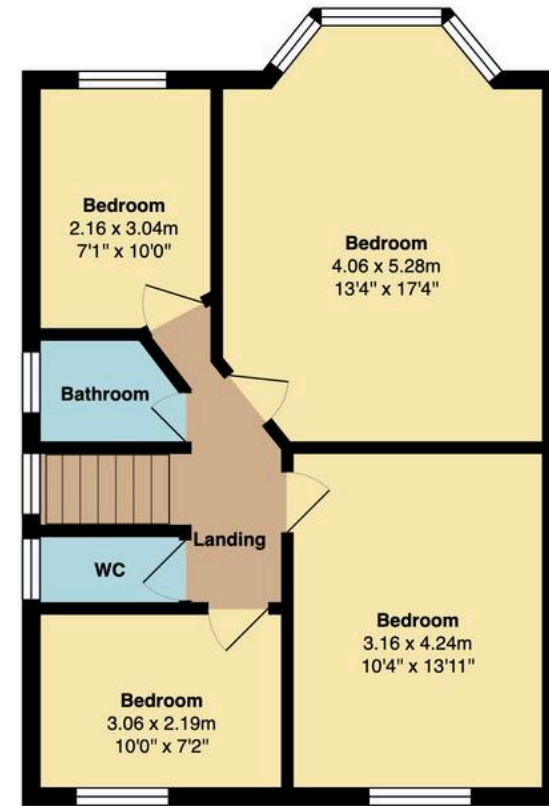




Lower Ground Floor
Area: 56.3 m² ... 606 ft²



Ground Floor
Area: 60.1 m² ... 647 ft²



First Floor
Area: 58.4 m² ... 629 ft²

